

T.I.P. (Technical Information Package)

Number: 103

Subject: Pick-up Bed Mounts

Model Year(s) Effected: 1947—1953

Model(s) Effected: Chevrolet® Advance Design 1/2-Ton Pick-ups (Short Box)

INTRODUCTION

All information, illustrations and specifications are based on the best information available at the time of publication. The author cannot guarantee the accuracy of the information contained in this publication. Corrections are welcomed, and can be submitted to randy74@charter.net.

Information included in this publication comes from a variety of sources, that include, but are not limited to the following:

Bed Restoration Manual for Early Chevrolet and GMC Pickup Trucks®

PICK-UP BED MOUNTS

The pick-up bed is mounted to the vehicle frame at six locations (three on each side of the bed). One set is located at the front of the bed (Figure 1), another set located just behind the rear axle (Figure 2), and the third set located at the rear of the pick-up bed (Figure 3).

The bed planks are bolted to a series of crossmembers, or “sills”. Several of these crossmembers are also used as mounting points for the bed. These crossmembers are an open channel design, with the open end of the channel facing down.

On each side of the crossmember, at the bed mounting points, a plate is attached to the bottom of the channel. These plates will rest against the bed-mounting spacer blocks.

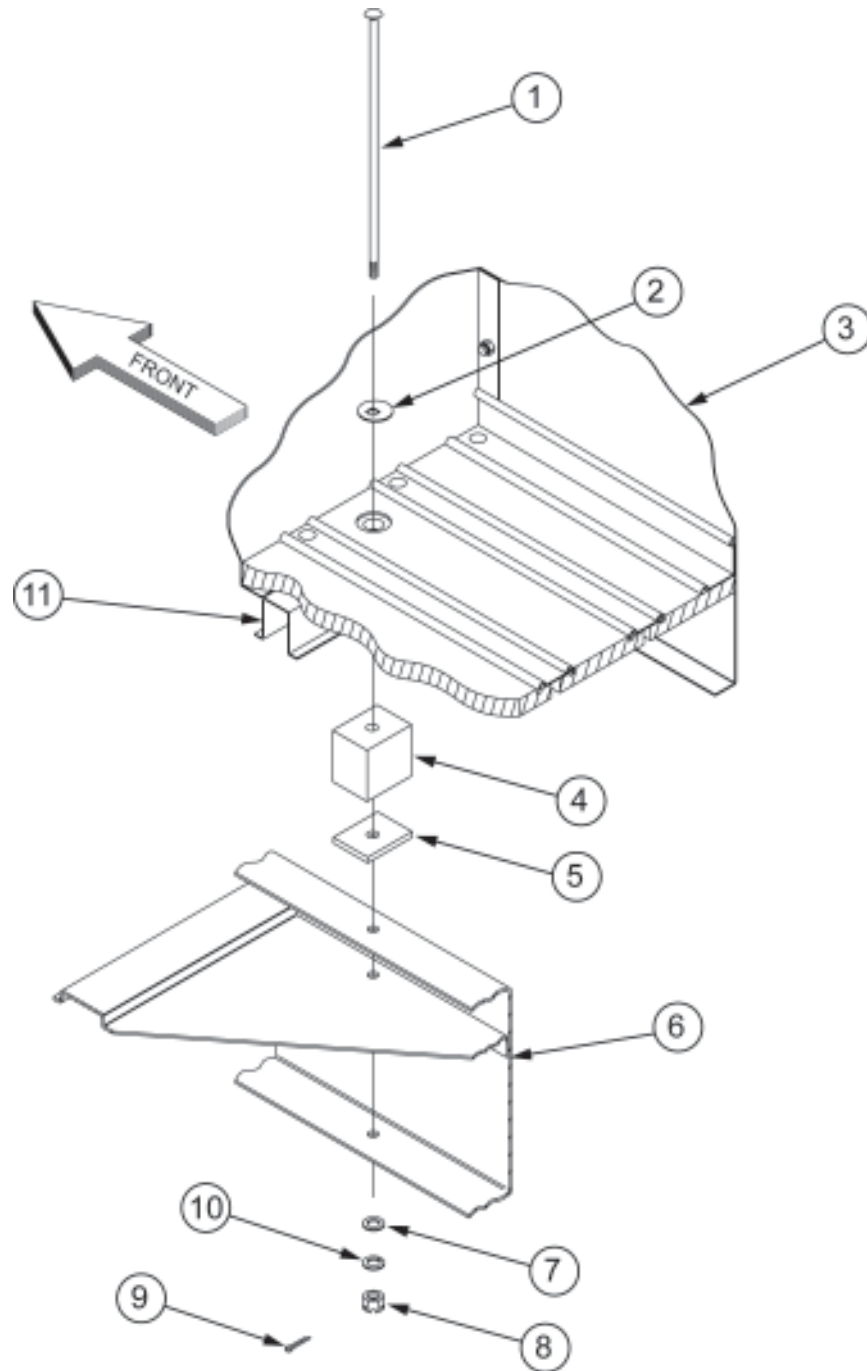
The front crossmember attaches to the front bed panel, and is also used as the front bed mount position (Figure 1). The spacer blocks are placed between the crossmember and the frame. Isolator pads are placed between the spacer blocks and the frame rails to minimize wear and noise.

Each of the the front mounting blocks are secured in place with a 12-inch long carriage bolt, that passes through a special (offset) washer, bed plank, support crossmember, spacer block, isolator pad and the upper and lower frame rail flanges. The carriage bolt is secured with a flat washer, split-lock washer and castle nut. The castle nut is locked in placed with a cotter pin.

NOTE: The special (offset) washers used in all mounting positions, prevent the carriage bolts from turning while the nuts are being tightened.

The second bed mounting position at the third crossmember, is located just behind the rear axle (Figure 2). The spacer blocks and isolator pads are secured in place with 7-inch long carriage bolts that pass through the upper frame rail flanges, special (offset) washers, flat washers, split lock washers and castle nuts. The castle nuts are locked in placed with cotter pins.

The rear of the bed (Figure 3) is mounted directly to the frame. Steel boxes that act as spacers are welded to the rear crossmember. The rear of the bed is secured with 7-inch long carriage bolts that pass through the upper frame rail flanges, special (offset) washers, flat washers, split lock washers and castle nuts. The castle nuts are locked in placed with cotter pins.



A460162A (R. BAUMANN)

Figure 1: Front Bed Mount (Passenger Side Shown)

- 1—Carriage Bolt (Drilled for Cotter Pin)
- 2—Special (Offset) Washer
- 3—Bed
- 4—Spacer Block
- 5—Isolator Pad
- 6—Frame

- 7—Flat Washer
- 8—Cotter Pin
- 9—Split-Lock Washer
- 10—Castle Nut
- 11—Crossmember

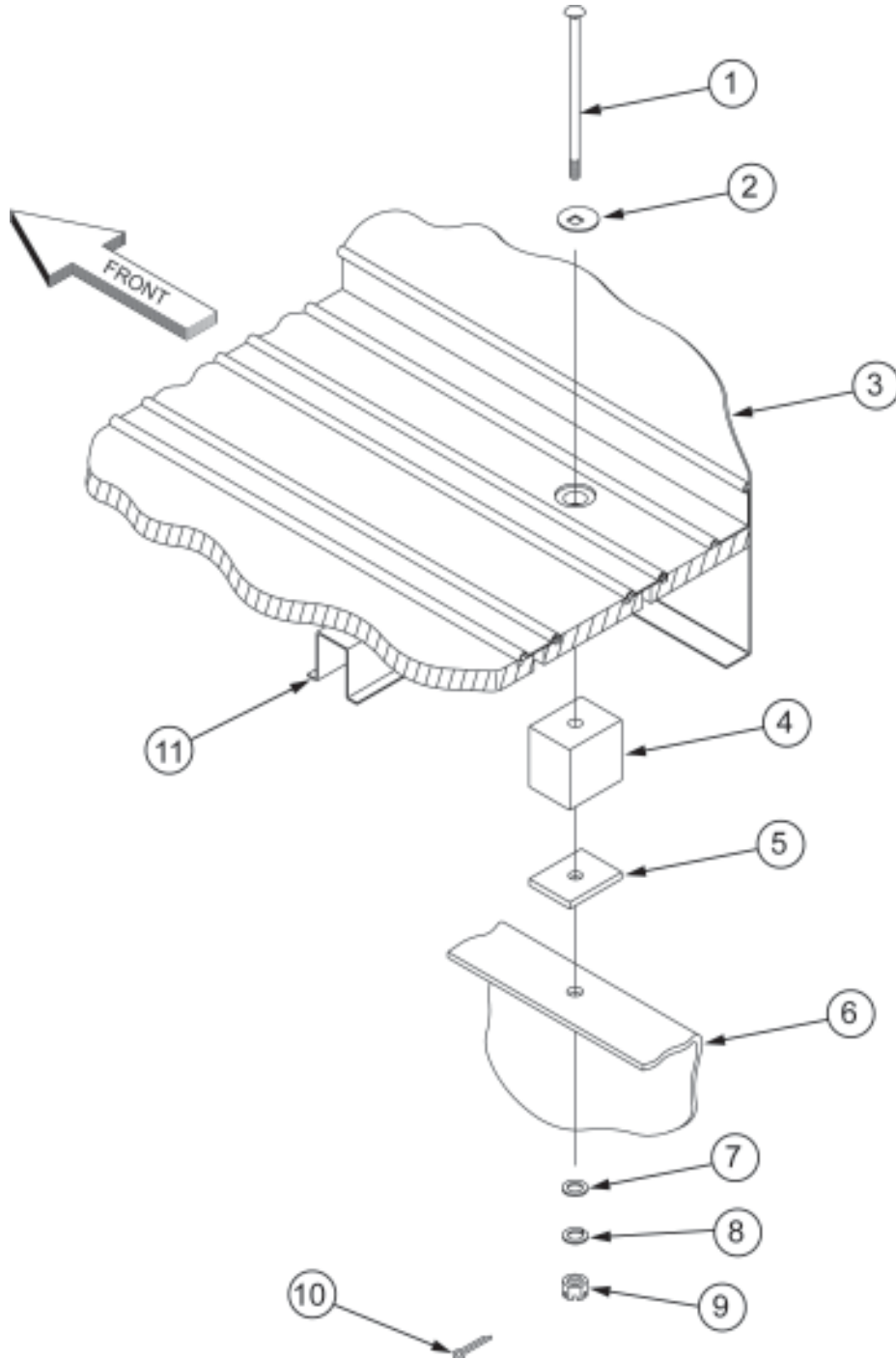


Figure 2: Middle Bed Mount (Passenger Side Shown)

A460163A (R. BAUMANN)

- 1—Carriage Bolt (Drilled for Cotter Pin)
- 2—Special (Offset) Washer
- 3—Bed
- 4—Spacer Block
- 5—Isolator Pad
- 6—Frame

- 7—Flat Washer
- 8—Split-Lock Washer
- 9—Castle Nut
- 10—Cotter Pin
- 11—Crossmember

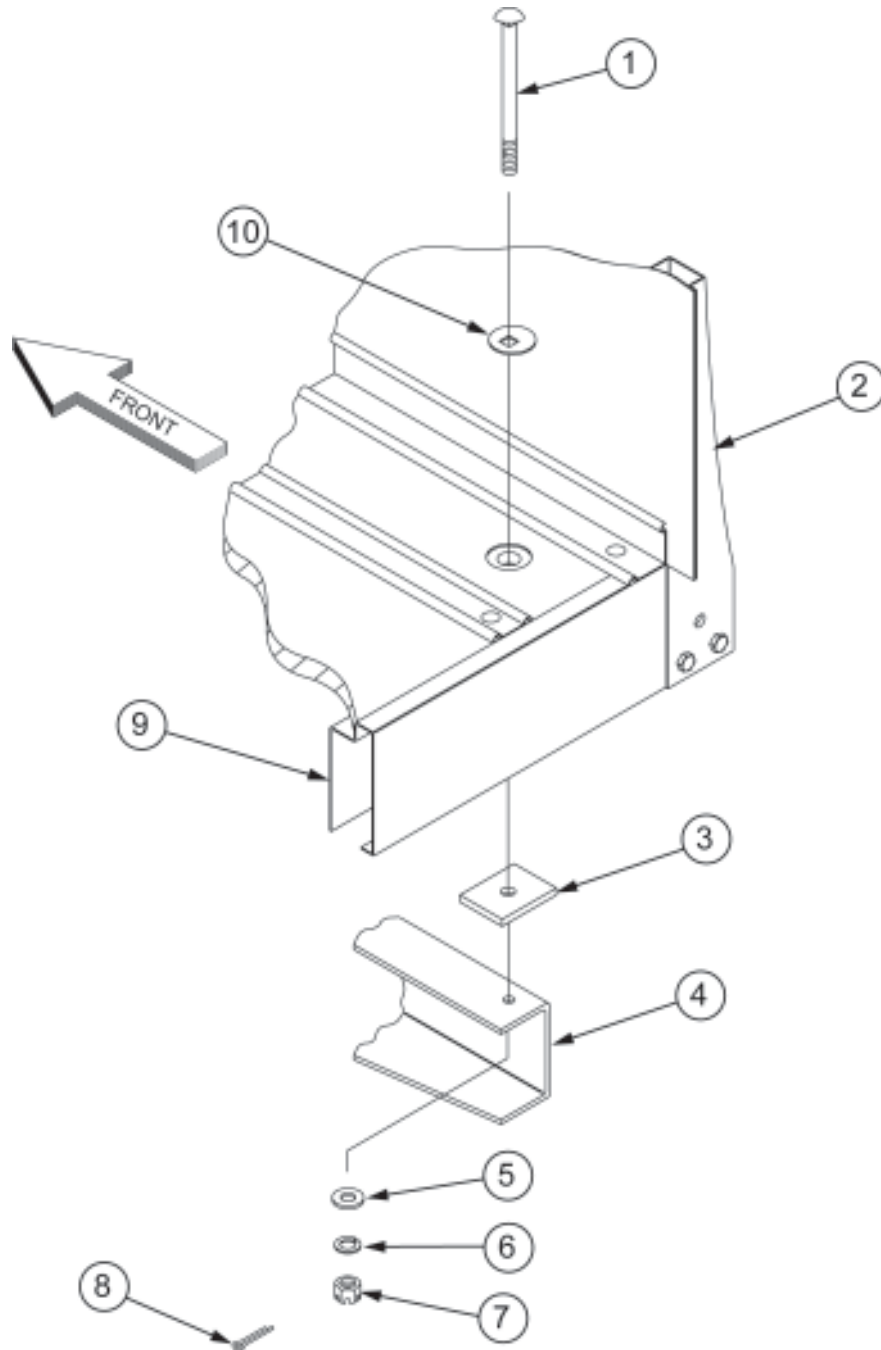


Figure 3: Rear Bed Mount (Passenger Side Shown)

A460164A (R. BAUMANN)

NOTE: All quantities are per side.

1—Carriage Bolt (Drilled for Cotter Pin)

2—Bed

3—Isolated Pad

4—Frame

5—Flat Washer

6—Split-Lock Washer

7—Castle Nut

8—Cotter Pin

9—Rear Crossmember

10—Special (Offset) Washer